

GRS Low Profile Ball Vice

For Engraving And Jewelry Making

#003-615

Maintenance

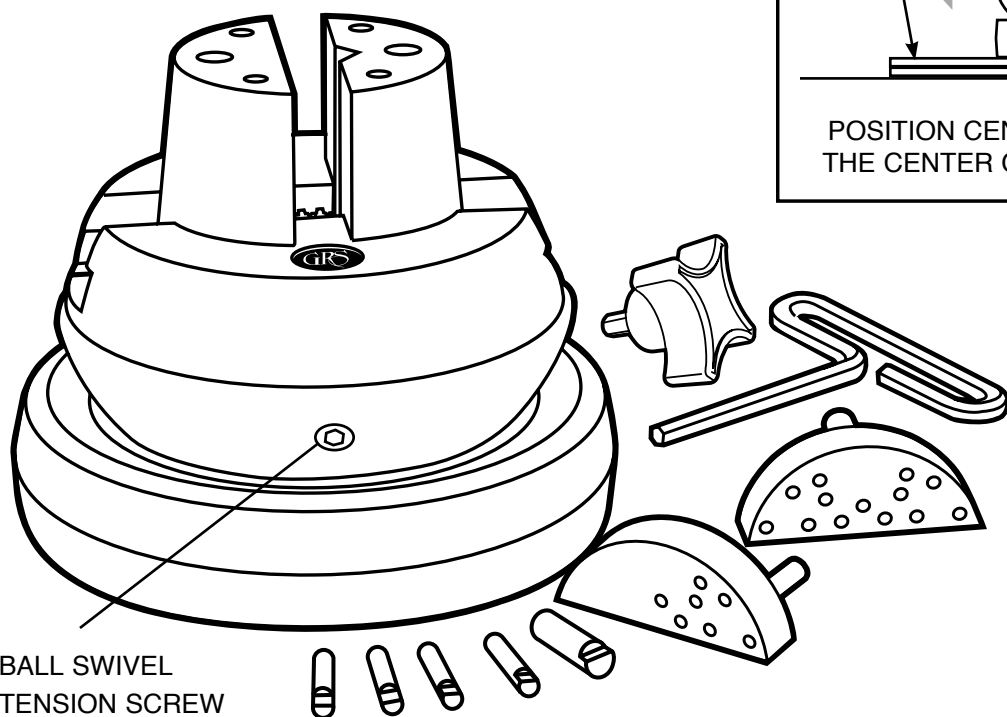
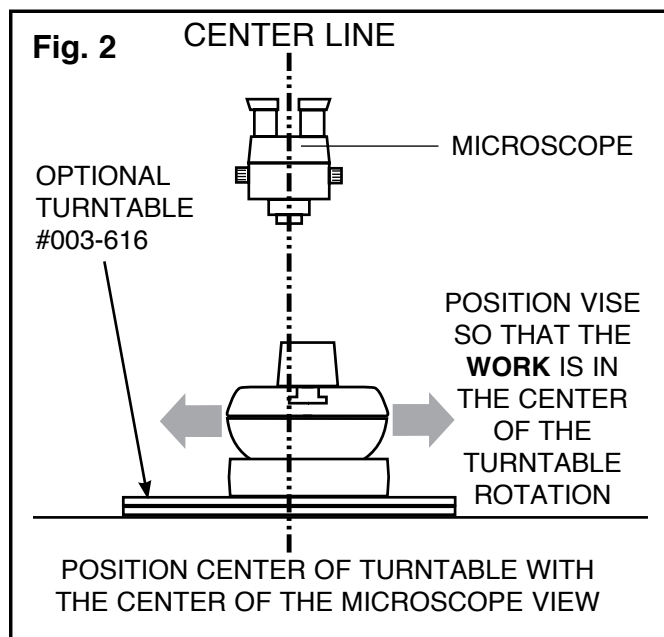
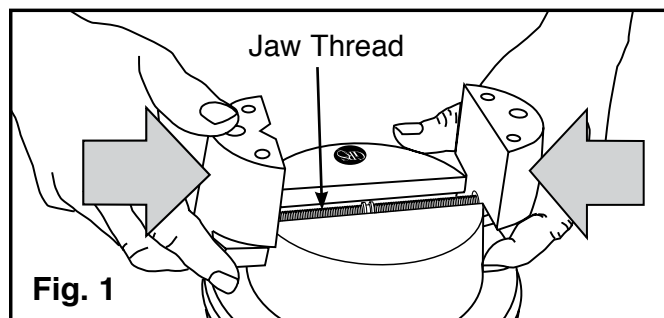
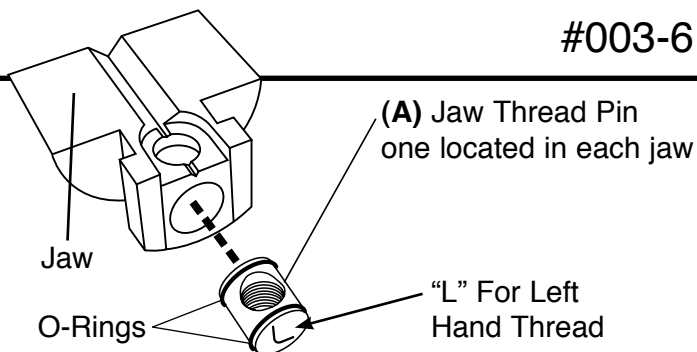
Based on usage, open jaws fully and clean any dirt and metal pieces from the threads. After cleaning, apply a small amount of light oil to the threads.

Jaw Thread Replacement

Over tightening the jaws will cause wear and damage to the threads. If jaws become loose, replace with kit #003-627. Remove jaws by opening wide until they come off the jaw screw. The thread pin (A) is located on the under side of each jaw. **Before removing pins** locate the left hand pin, marked "L". Replace it with the same. Apply a small amount of grease to the O-rings before installing them. Start the jaws threads at the same time when replacing them. Hold each jaw in position (Fig. 1) and turn the jaw screw. An extra pair of hands makes this easier, or place a large rubber band over the jaws.

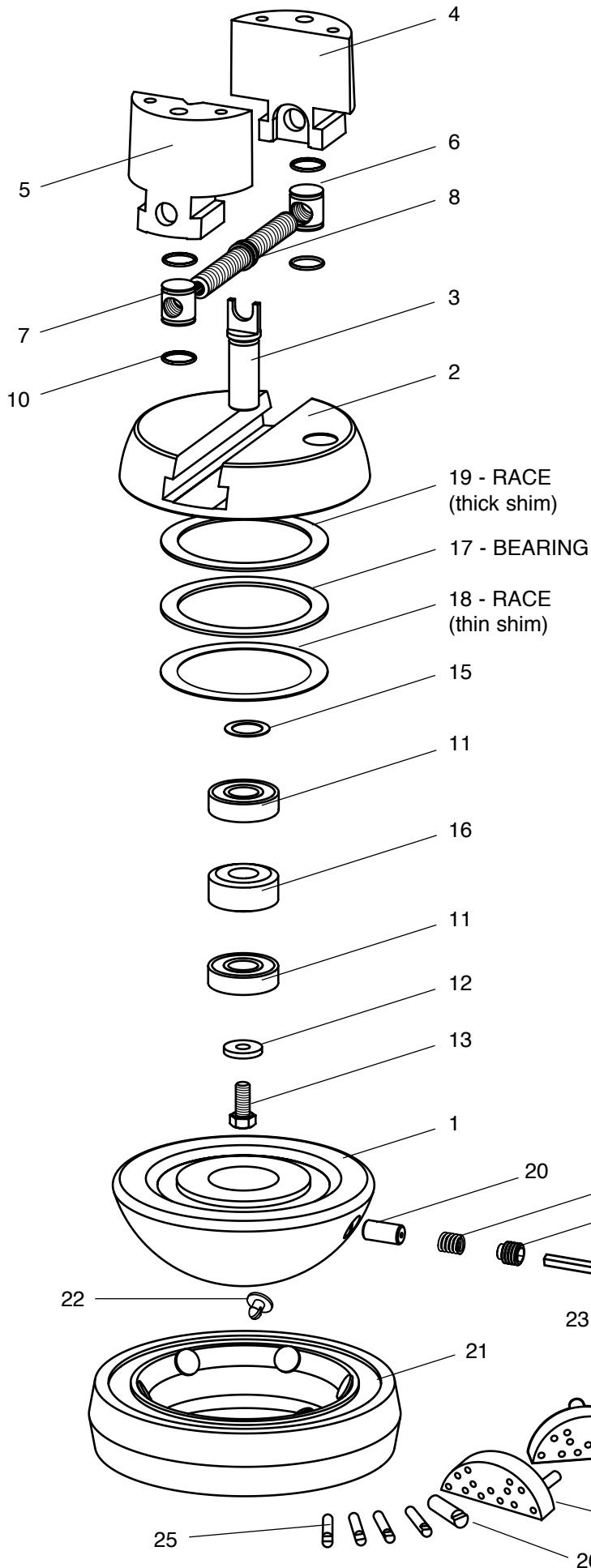
Optional Turntable Base For Microscope Work

To use the turntable base, lock the vise by tightening the swivel tension screw until the ball will not turn. The turntable now becomes your rotation, allowing you to adjust the work's center of rotation into the field of view of the microscope. Align the center of the turntable with the center of the microscope (Fig. 2). Change working views by repositioning the vise.



900 Overlander Road
P.O. Box 1153
Emporia, KS 66801 USA
Toll-Free: 1-800-835-3519
Phone: 620-343-1084
Fax: 620-343-9640
E-mail: grs@grstools.com
www.grstools.com

GRS Low Profile Ball Vise Complete Assembly #003-615



PART #	DESCRIPTION
1	003-220 Block Base
2	003-219 Block Crown
3	003-221 Post
4	003-009 Jaw - Right Hand
5	003-008 Jaw - Left Hand
6	003-064 Pin - Left Hand
7	003-065 Pin - Right Hand
8	003-007 Screw Post
9	003-067 1/2 - 13 x 1/2 SSS Fit Pt HF Dog
10	002-127 O-Ring - 0.625" x 0.75" x 0.062"
11	022-181 Bearing 6203ZZ
12	002-214 Washer - 0.312" x 0.859" x 0.125"
13	002-112 5/16-8 x 3/4" HHB Z/P
14	003-212 Spring
15	022-180 Washer
16	003-222 Spacer
17	002-088 Bearing 3" x 3.75" x 0.078"
18	002-089 Bearing 3" x 3.75" x 0.031" Race
19	002-213 Bearing 3" x 3.75" x 0.062" Race
20	003-223 Lock Pin
	003-506 Tire Assembly (21 & 22)
21	002-090 Tire
22	002-209 Fastener - Push-In
23	002-091 Wrench - 1/4" T-Handle Hex
24	003-661 1/4" Hex Drive Knob
25	003-015 Jaw Pin - 1/4"
26	003-016 Jaw Pin - 3/8"
27	003-507 Pin Plate - 2 pin
28	003-508 Pin Plate - 1 pin

Replacement Thread Pin Kit

#003-627 (Not Shown). Includes Jaw Screw, Left and Right Thread Pins, O-Rings, and Tube of Grease.

Optional Turntable For Microscope Work

#003-616 (Not Shown).