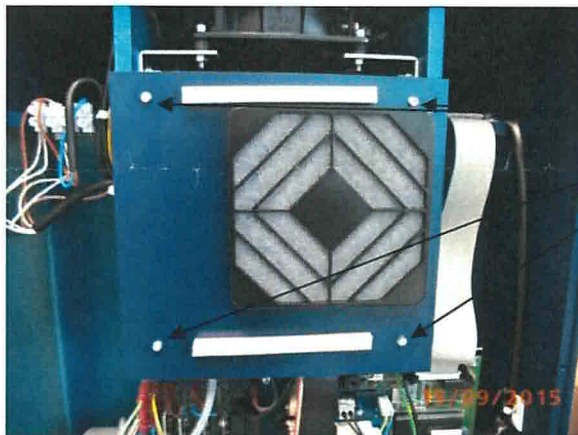


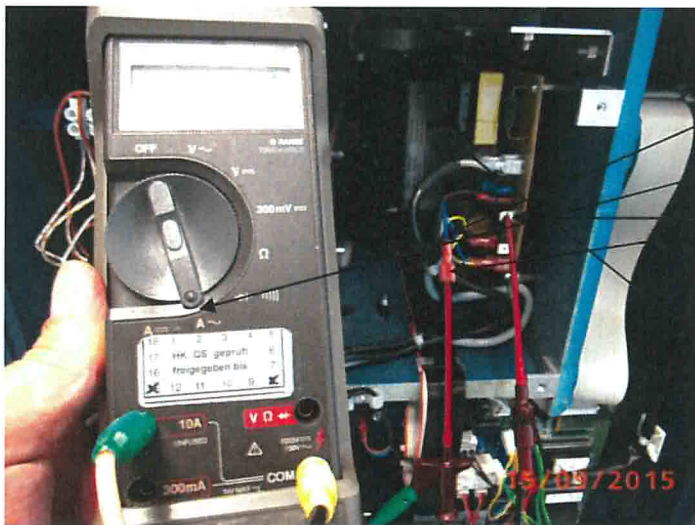
Adjustment of Ultrasonic tank to ultrasonic circuit board



Remove
4x screw M3x8 and
6x screw M4x 8
Fold the back wall on left side..

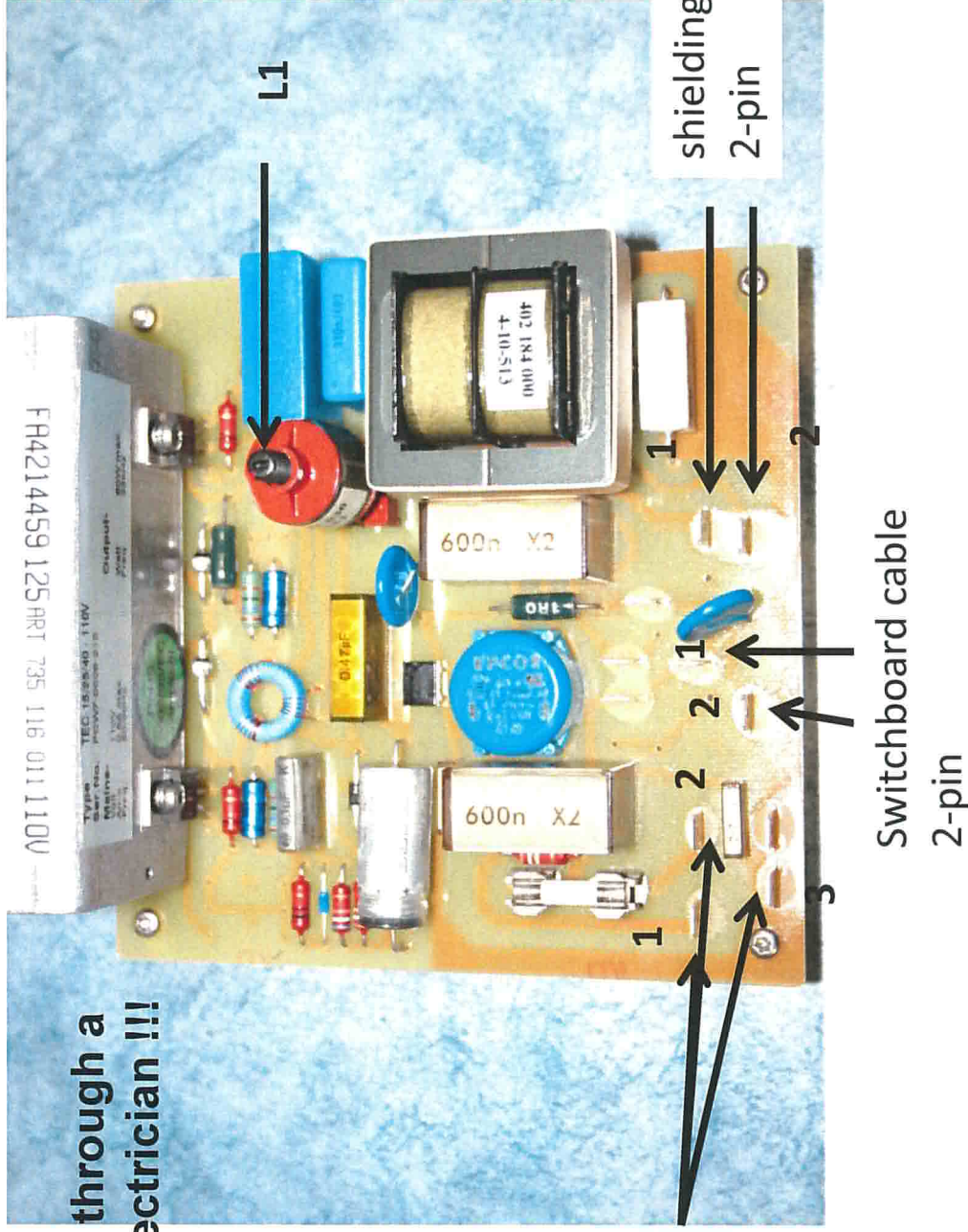


Remove 4x screws M3x8
On new devices:
Fold down the fan heater
On old devices:
Unplug the plug



Pull off the cable.
Switch the meter to current measurement.
Connect the measuring cable.
Switch on the machine.
Start the program with ultrasound 9min.
Set up the ferrite core approx. 350 - 420 mA
Pay attention!! Should the ferrite core be secured with paint. Dissolve varnish with a little thinner.

Installation through a licenced electrician !!!



mains cable
3-pin

shielding HF cable
2-pin

Switchboard cable
2-pin

Manual for alignment Ultrasonic:
Amperemeter between switching cable 2 pins and pin 2 scolded. Machine with ultrasonic program start. As soon as ultrasonic is started, adjust the amperage at the ferrite core of L1 to 40-45 mA.