

# Thermo printer

## Changing interface: RS232 to Bluetooth



loosen the 2 screws



remove the RS232 slot



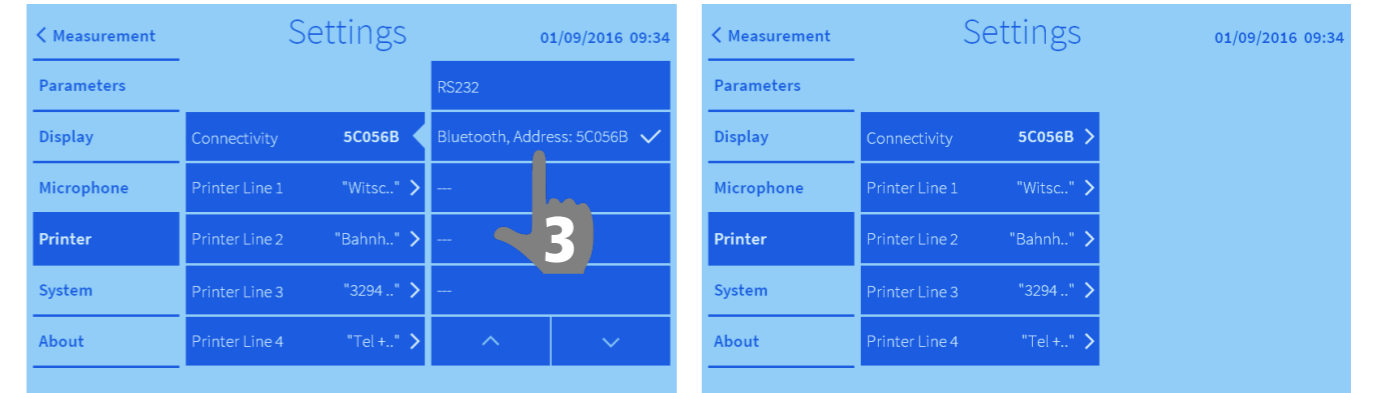
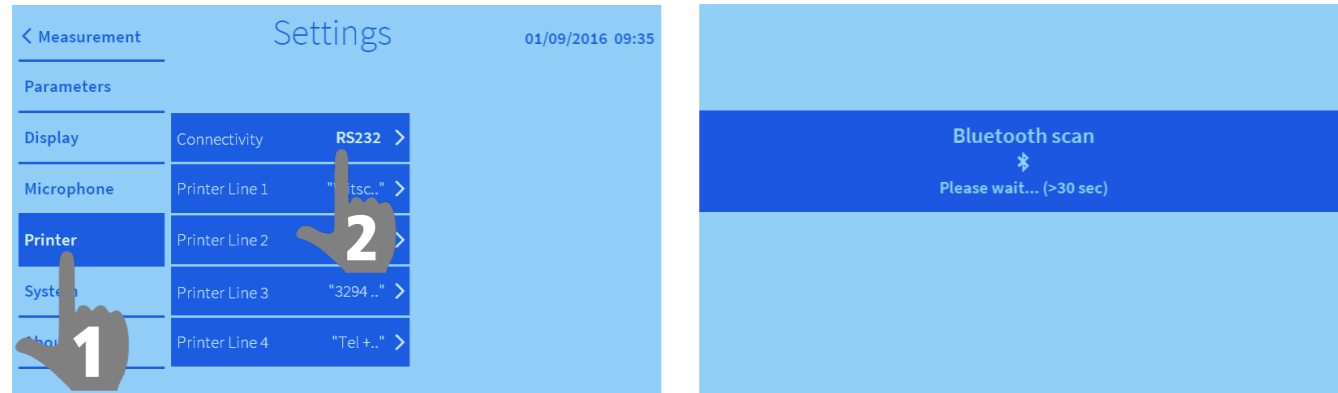
your verification number for Bluetooth  
insert the Bluetooth slot



tighten the Bluetooth slot with 2 screws

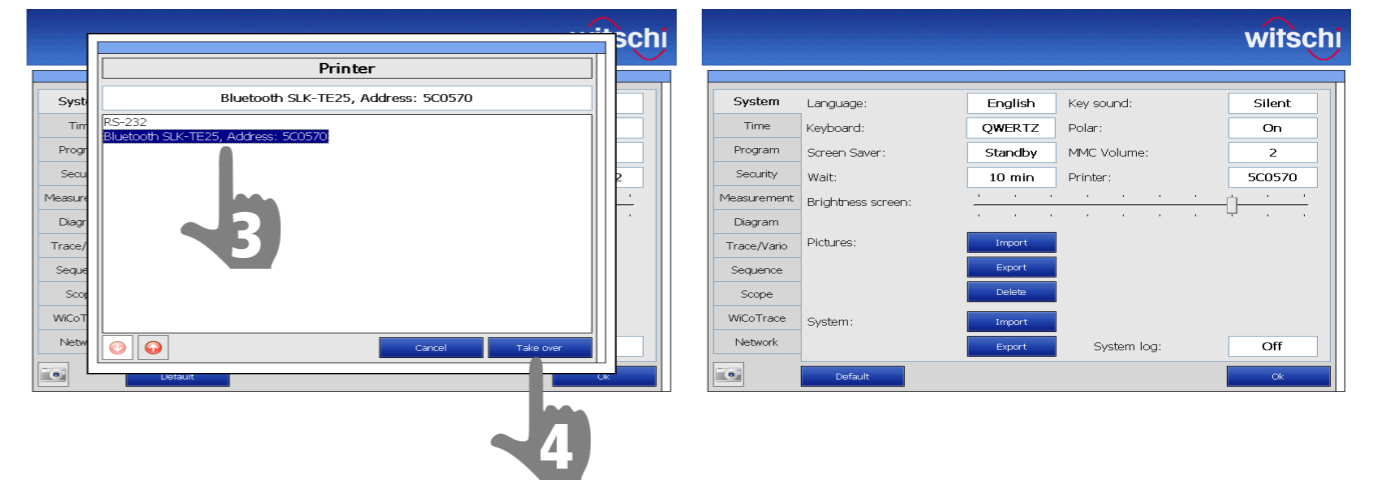
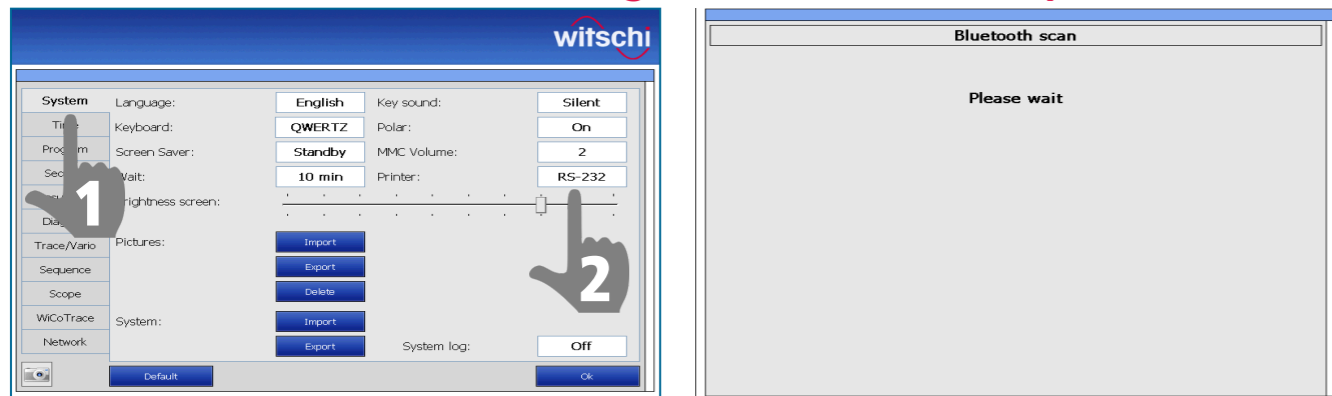
### Configuration WATCH EXPERT

First insert the Bluetooth Dongle in the WATCH EXPERT USB port.



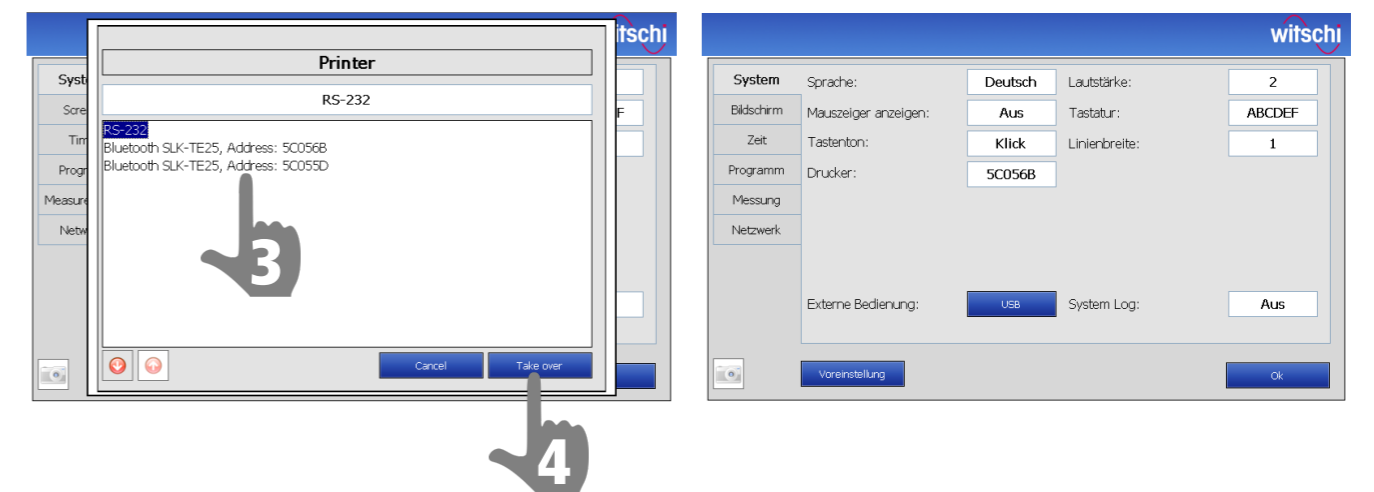
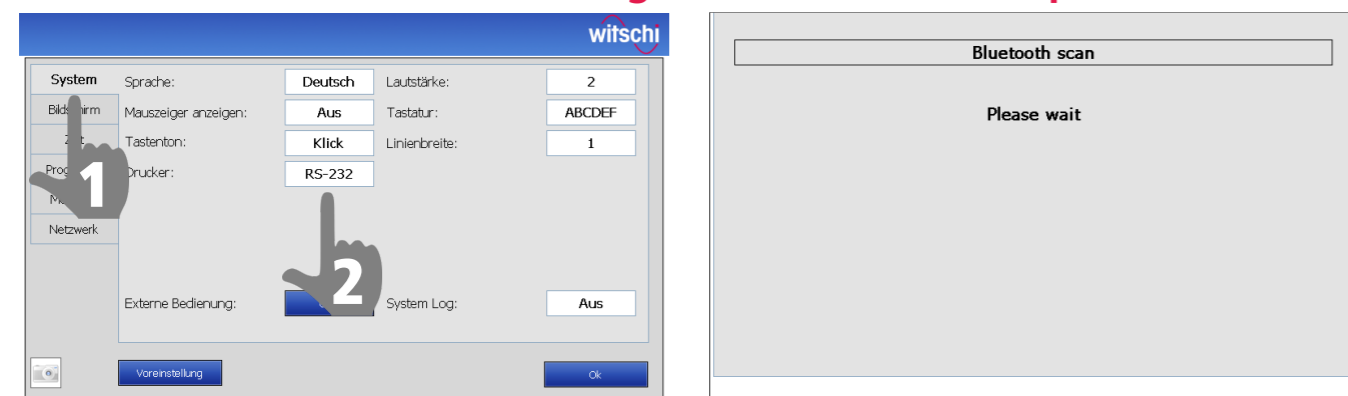
### Configuration Chronoscope X1 (G3) with Firmware V1.1.0 or later versions

First insert the Bluetooth Dongle in the Chronoscope X1 (G3) USB port.



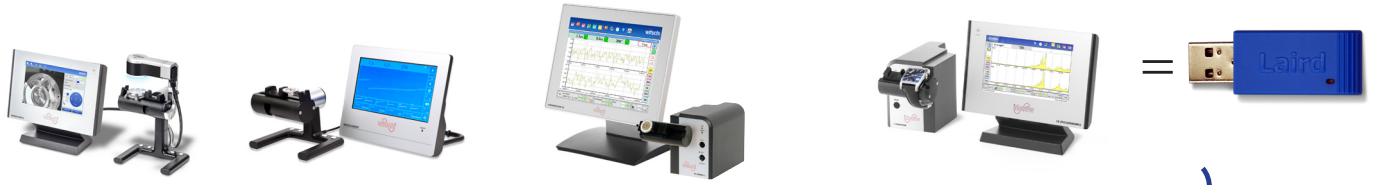
### Configuration Chronoscope S1 (G2) with Firmware V2.2 or later versions

First insert the Bluetooth Dongle in the Chronoscope S1 (G2) USB port.



**3** → select your verification number for Bluetooth  
see page 1 / image no. 3

# Connection to Witschi devices with Bluetooth



WisioScope S      WATCH EXPERT      Chronoscope X1 (G3)      Chronoscope S1 (G2)

# Connection to Witschi devices with RS232

For Witschi devices:

- Analyzer Twin
- Analyzer Q1
- Analyzer Q2
- Newtech Handy II
- Chronoscope S1 (G1)
- Chronoscope S1 (G2)
- Watch Expert III
- Proofmaster S
- Proofmaster M
- Qualimaster



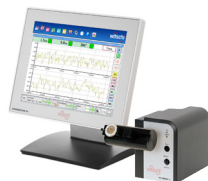
95.13.203



JB01-SLK-TE25-S



WATCH EXPERT



Chronoscope X1  
Chronoscope X1 (G2)  
Chronoscope X1 (G3)



WisioScope S



GA05-E715251

95.13.203

and